


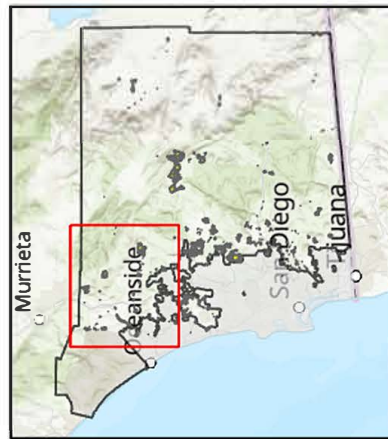
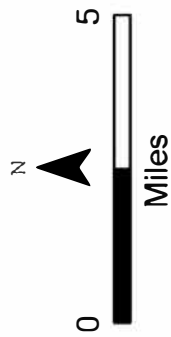


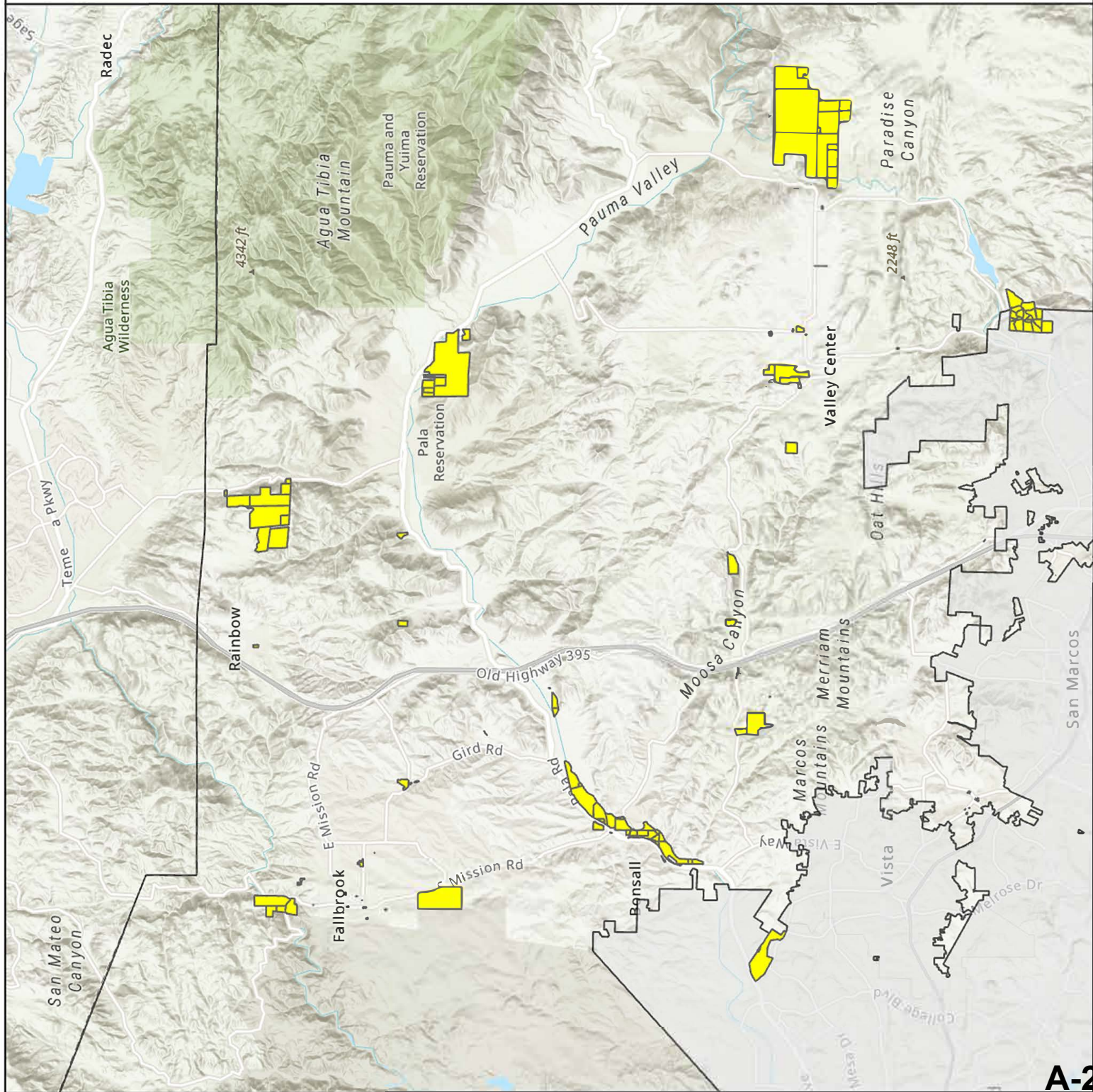
**ATTACHMENT A – MAP  
OF COUNTY OWNED  
PARCELS**

# North County- Fallbrook, Rainbow, Valley Center, North Escondido



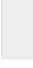
-  County Owned Parcels
-  Unincorporated County
-  Incorporated Cities

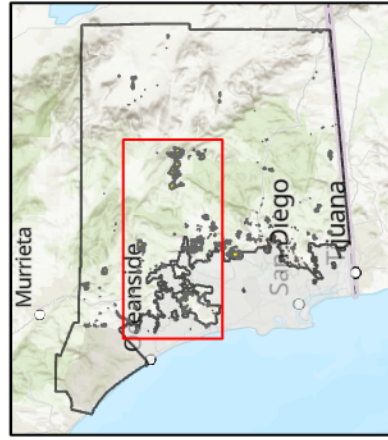
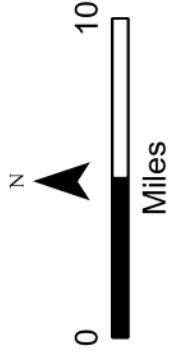


THIS MAP/DATA IS PROVIDED WITHOUT WARRANTY OF ANY KIND, EITHER EXPRESSED OR IMPLIED, INCLUDING BUT NOT LIMITED TO, THE IMPLIED WARRANTIES OF MERCHANTABILITY AND FITNESS FOR A PARTICULAR PURPOSE. Full text of this legal notice can be found at: [http://www.sandagis.org/legal\\_notice.htm](http://www.sandagis.org/legal_notice.htm)

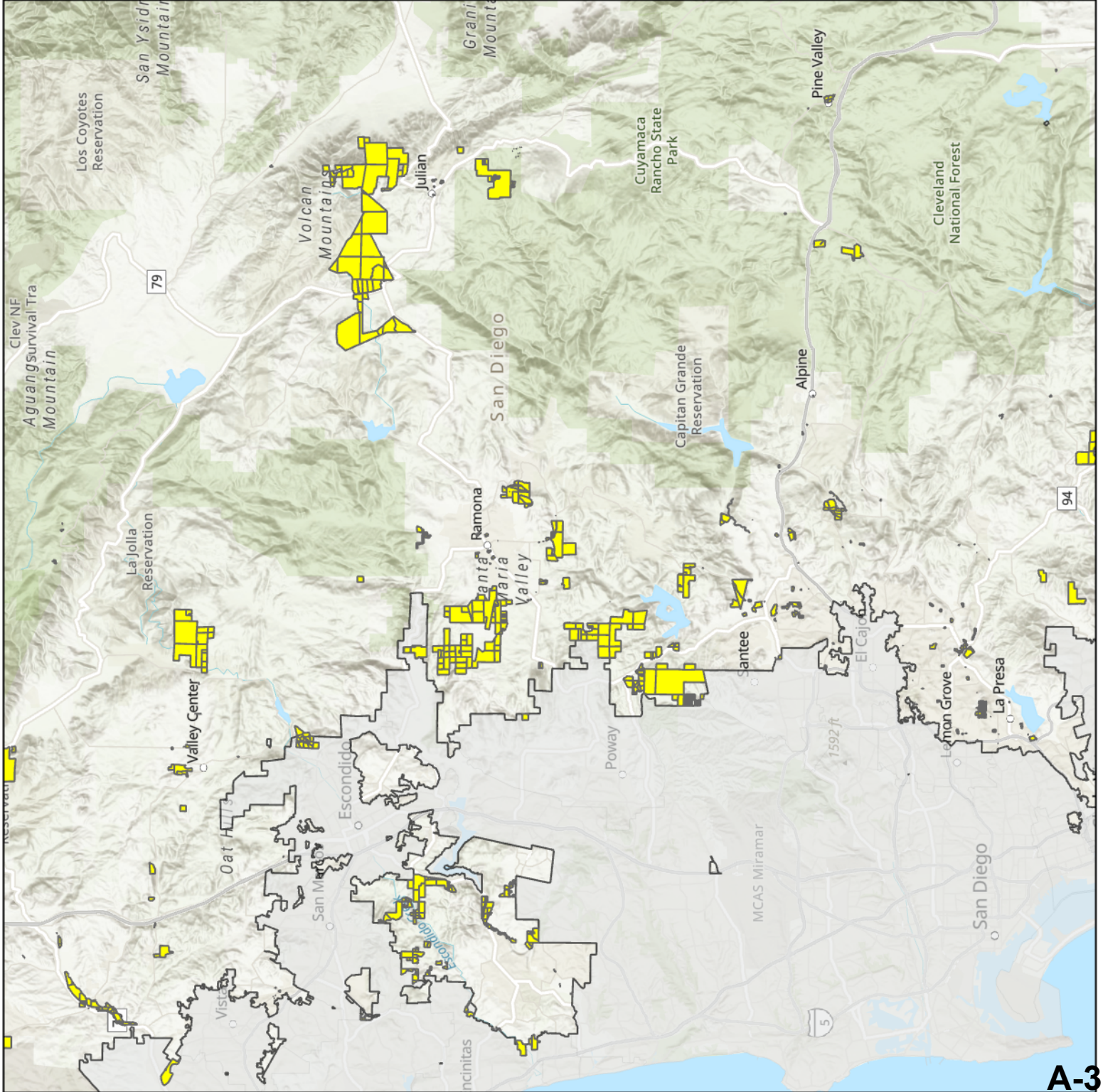


# Central County- Rancho Santa Fe, Escondido, Ramona, Lakeside, El Cajon, Alpine




-  County Owned Parcels
-  Unincorporated County
-  Incorporated Cities

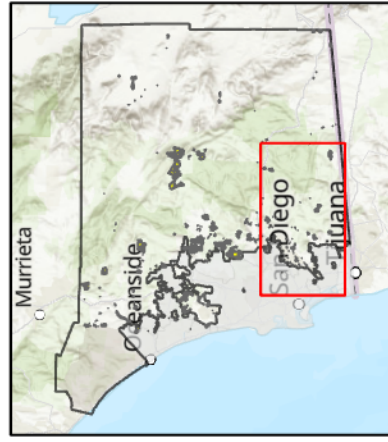
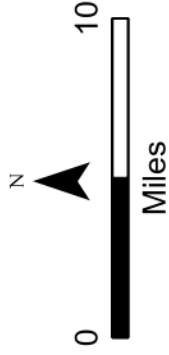


THIS MAP/DATA IS PROVIDED WITHOUT WARRANTY OF ANY KIND, EITHER EXPRESSED OR IMPLIED, INCLUDING BUT NOT LIMITED TO, THE IMPLIED WARRANTIES OF MERCHANTABILITY AND FITNESS FOR A PARTICULAR PURPOSE. Full text of this legal notice can be found at: [http://www.sandagis.org/legal\\_notice.htm](http://www.sandagis.org/legal_notice.htm)

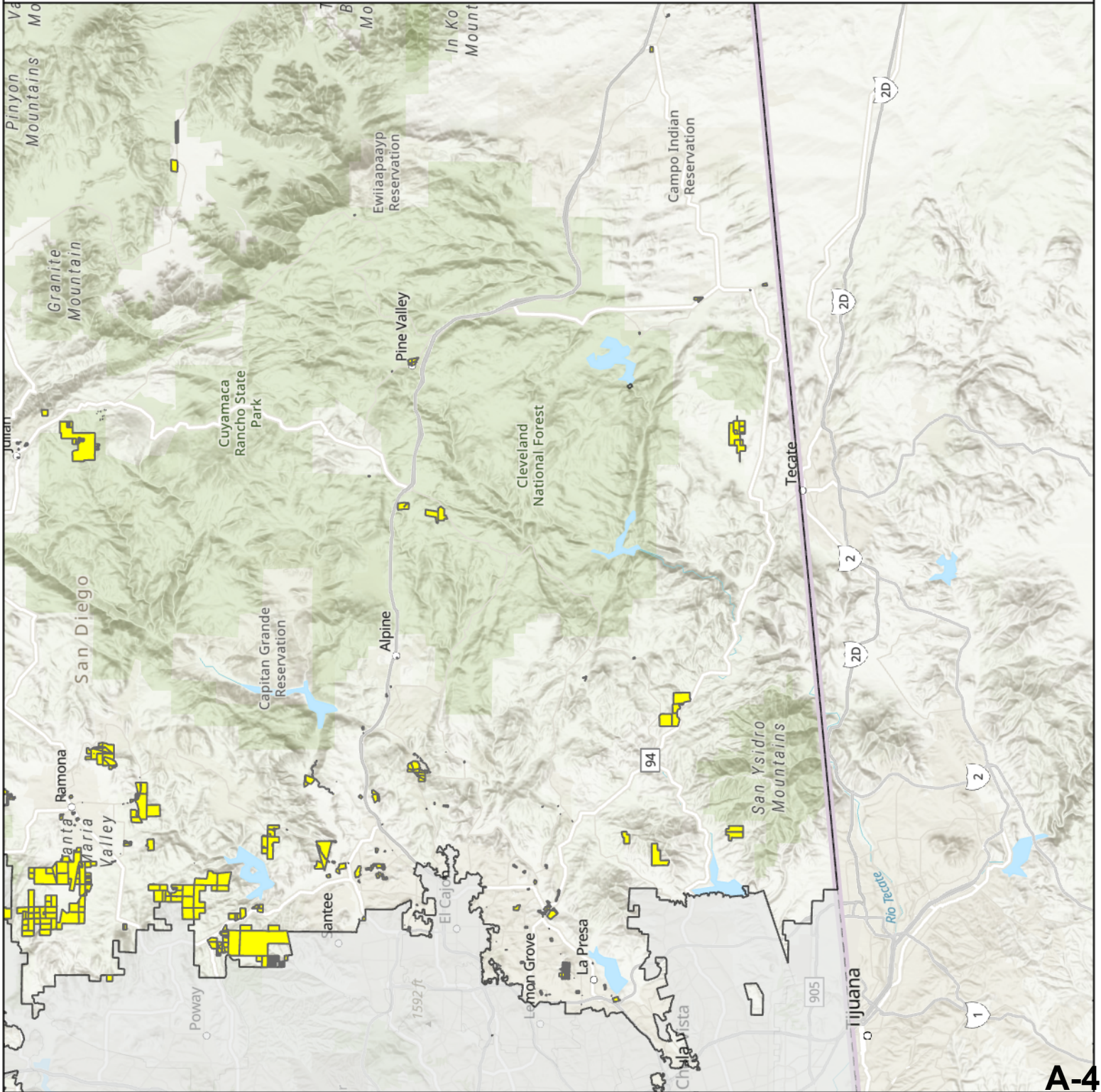


# South County- Lemon Grove, Spring Valley, Otay, Petrero




-  County Owned Parcels
-  Unincorporated County
-  Incorporated Cities

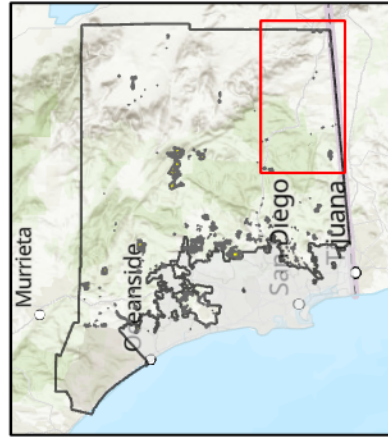
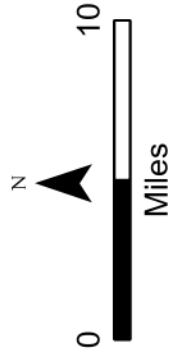


THIS MAP/DATA IS PROVIDED WITHOUT WARRANTY OF ANY KIND, EITHER EXPRESSED OR IMPLIED, INCLUDING BUT NOT LIMITED TO, THE IMPLIED WARRANTIES OF MERCHANTABILITY AND FITNESS FOR A PARTICULAR PURPOSE. Full text of this legal notice can be found at: [http://www.sangis.org/legal\\_notice.htm](http://www.sangis.org/legal_notice.htm)

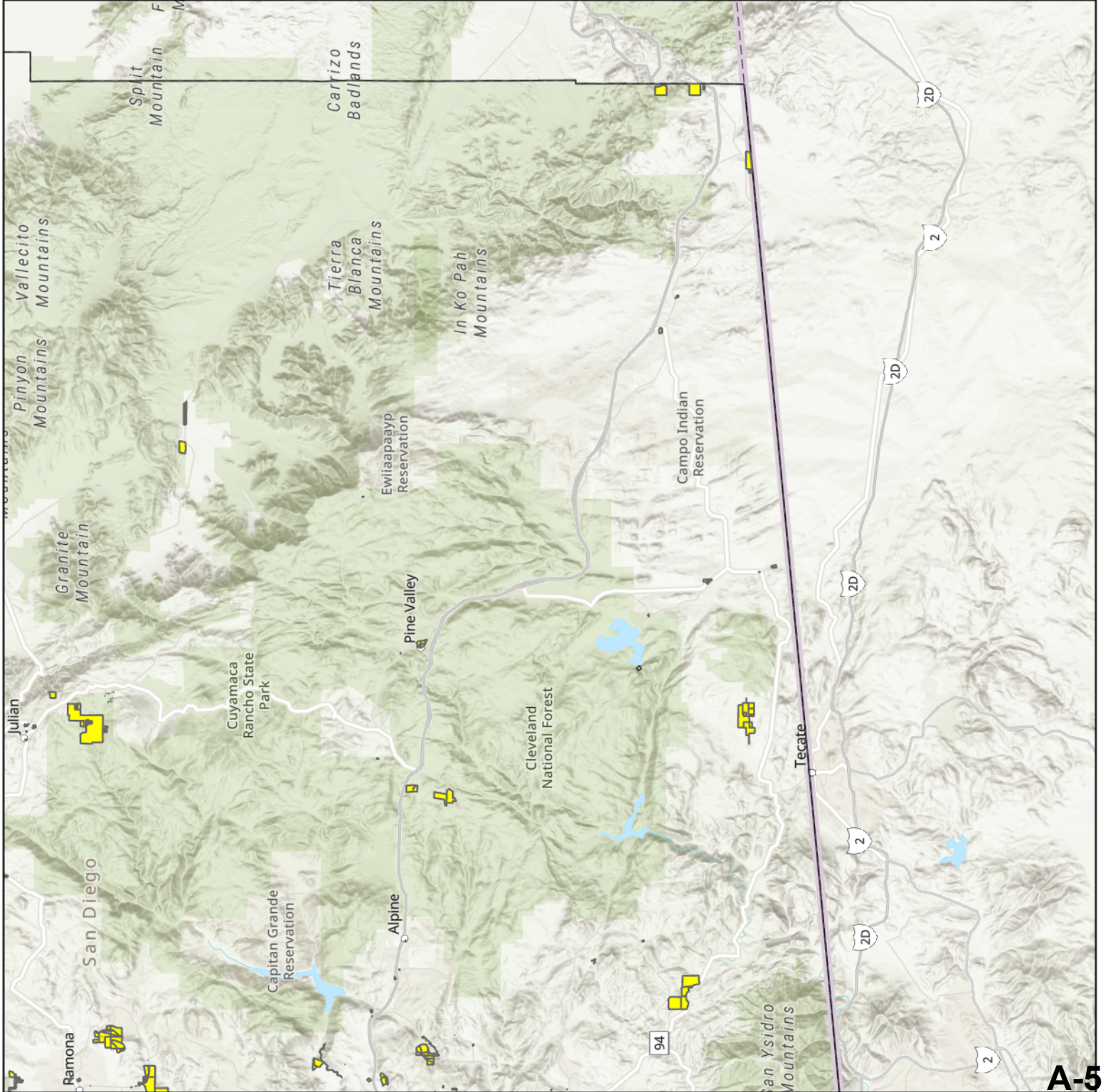


# South County- Campo, Boulevard, Jacumba




-  County Owned Parcels
-  Unincorporated County
-  Incorporated Cities

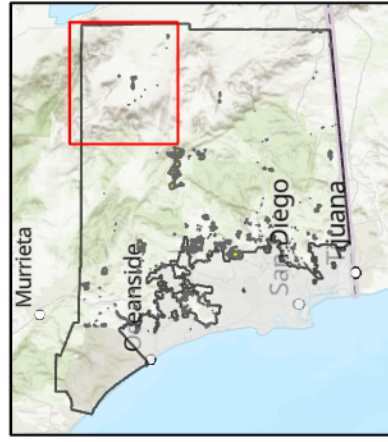
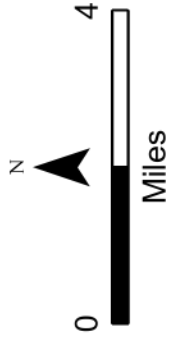


THIS MAP/DATA IS PROVIDED WITHOUT WARRANTY OF ANY KIND, EITHER EXPRESSED OR IMPLIED, INCLUDING BUT NOT LIMITED TO, THE IMPLIED WARRANTIES OF MERCHANTABILITY AND FITNESS FOR A PARTICULAR PURPOSE. Full text of this legal notice can be found at: [http://www.sangis.org/legal\\_notice.htm](http://www.sangis.org/legal_notice.htm)



# Desert and Borrego Springs

-  County Owned Parcels
-  Unincorporated County
-  Incorporated Cities



THIS MAP/DATA IS PROVIDED WITHOUT WARRANTY OF ANY KIND, EITHER EXPRESSED OR IMPLIED, INCLUDING BUT NOT LIMITED TO, THE IMPLIED WARRANTIES OF MERCHANTABILITY AND FITNESS FOR A PARTICULAR PURPOSE. Full text of this legal notice can be found at: [http://www.sanags.org/legal\\_notice.htm](http://www.sanags.org/legal_notice.htm)

